



LYPLA1 Polyclonal Antibody

Catalog No	YP-Ab-02664
Isotype	IgG
Reactivity	Human;Mouse;Rat
Applications	WB;IHC;IF;ELISA
Gene Name	LYPLA1
Protein Name	Acyl-protein thioesterase 1
Immunogen	The antiserum was produced against synthesized peptide derived from human LYPLA1. AA range:51-100
Specificity	LYPLA1 Polyclonal Antibody detects endogenous levels of LYPLA1 protein.
Formulation	Liquid in PBS containing 50% glycerol, 0.5% BSA and 0.02% sodium azide.
Source	Polyclonal, Rabbit,IgG
Purification	The antibody was affinity-purified from rabbit antiserum by affinity-chromatography using epitope-specific immunogen.
Dilution	Western Blot: 1/500 - 1/2000. Immunohistochemistry: 1/100 - 1/300. Immunofluorescence: 1/200 - 1/1000. ELISA: 1/40000. Not yet tested in other applications.
Concentration	1 mg/ml
Purity	≥90%
Storage Stability	-20°C/1 year
Synonyms	LYPLA1; APT1; LPL1; Acyl-protein thioesterase 1; APT-1; hAPT1; Lysophospholipase 1; Lysophospholipase I; LPL-I; LysoPLA I
Observed Band	25kD
Cell Pathway	Cytoplasm . Cell membrane . Nucleus membrane . Endoplasmic reticulum . Shows predominantly a cytoplasmic localization with a weak expression in the cell membrane, nuclear membrane and endoplasmic reticulum. .
Tissue Specificity	Platelets.
Function	catalytic activity:Palmitoyl-protein + H(2)O = palmitate + protein.,function:Hydrolyzes fatty acids from S-acylated cysteine residues in proteins such as trimeric G alpha proteins or HRAS. Also has low lysophospholipase activity.,similarity:Belongs to the AB hydrolase 2 family.,subunit:Homodimer.,
Background	This gene encodes a member of the alpha/beta hydrolase superfamily. The encoded protein functions as a homodimer, exhibiting both depalmitoylating as well as lysophospholipase activity, and may be involved in Ras localization and signaling. Alternate splicing results in multiple transcript variants. Pseudogenes of this gene have been defined on chromosomes 4, 6, and 7. [provided by RefSeq, Jul 2013],



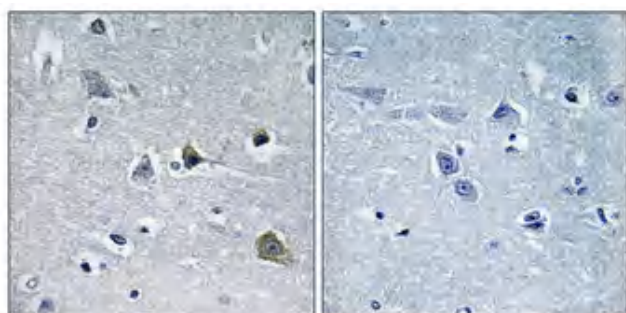
matters needing attention

Avoid repeated freezing and thawing!

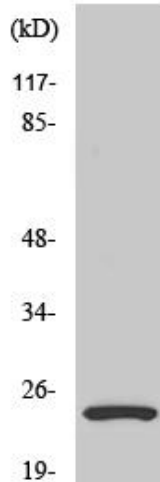
Usage suggestions

This product can be used in immunological reaction related experiments. For more information, please consult technical personnel.

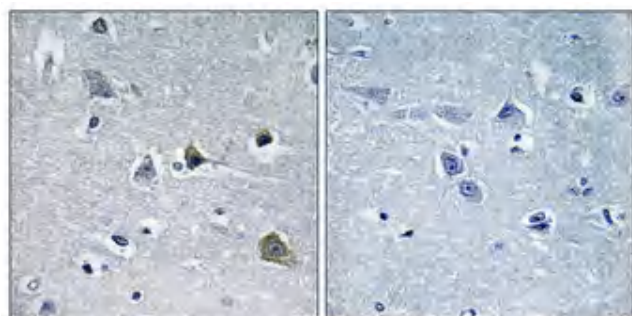
Products Images



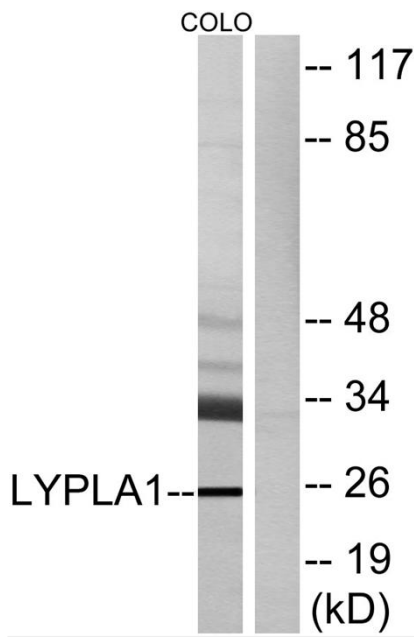
COLO205



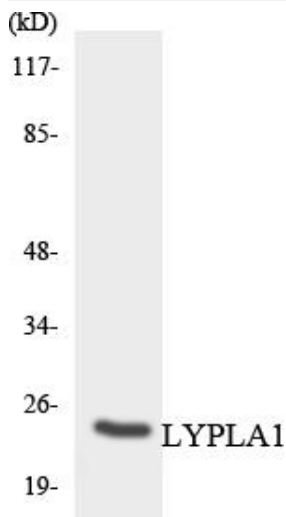
Western Blot analysis of various cells using LYPLA1 Polyclonal Antibody diluted at 1:2000



Immunohistochemical analysis of paraffin-embedded Human brain. Antibody was diluted at 1:100(4° overnight). High-pressure and temperature Tris-EDTA,pH8.0 was used for antigen retrieval. Negative contrl (right) obtaned from antibody was pre-absorbed by immunogen peptide.



Western blot analysis of lysates from COLO cells, using LYPLA1 Antibody. The lane on the right is blocked with the synthesized peptide.



Western blot analysis of the lysates from HeLa cells using LYPLA1 antibody.